

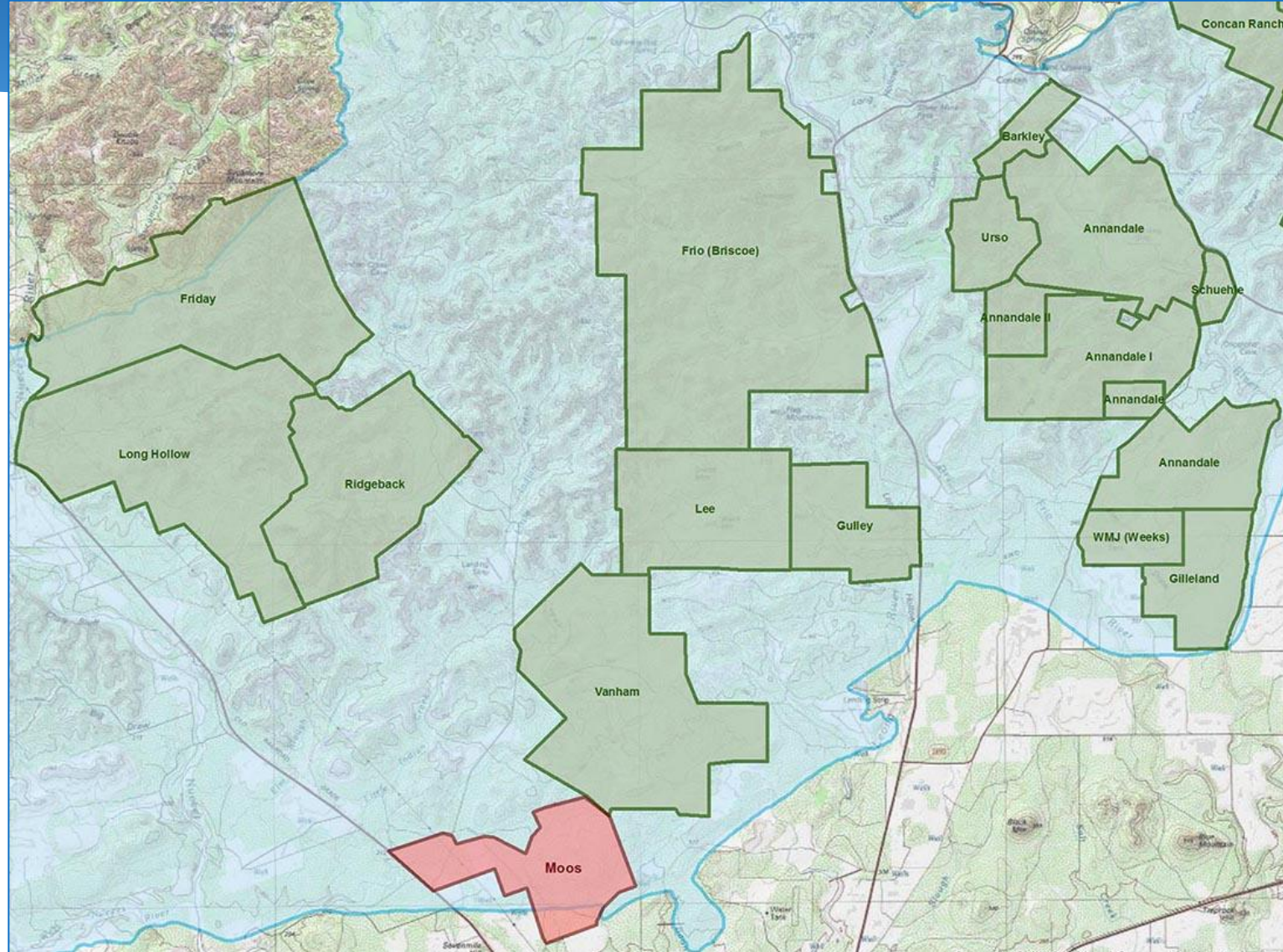
The Nature Conservancy



Moos Ranch
Mikeska Ranch



Moos Ranch (2,900 Acres) Uvalde County





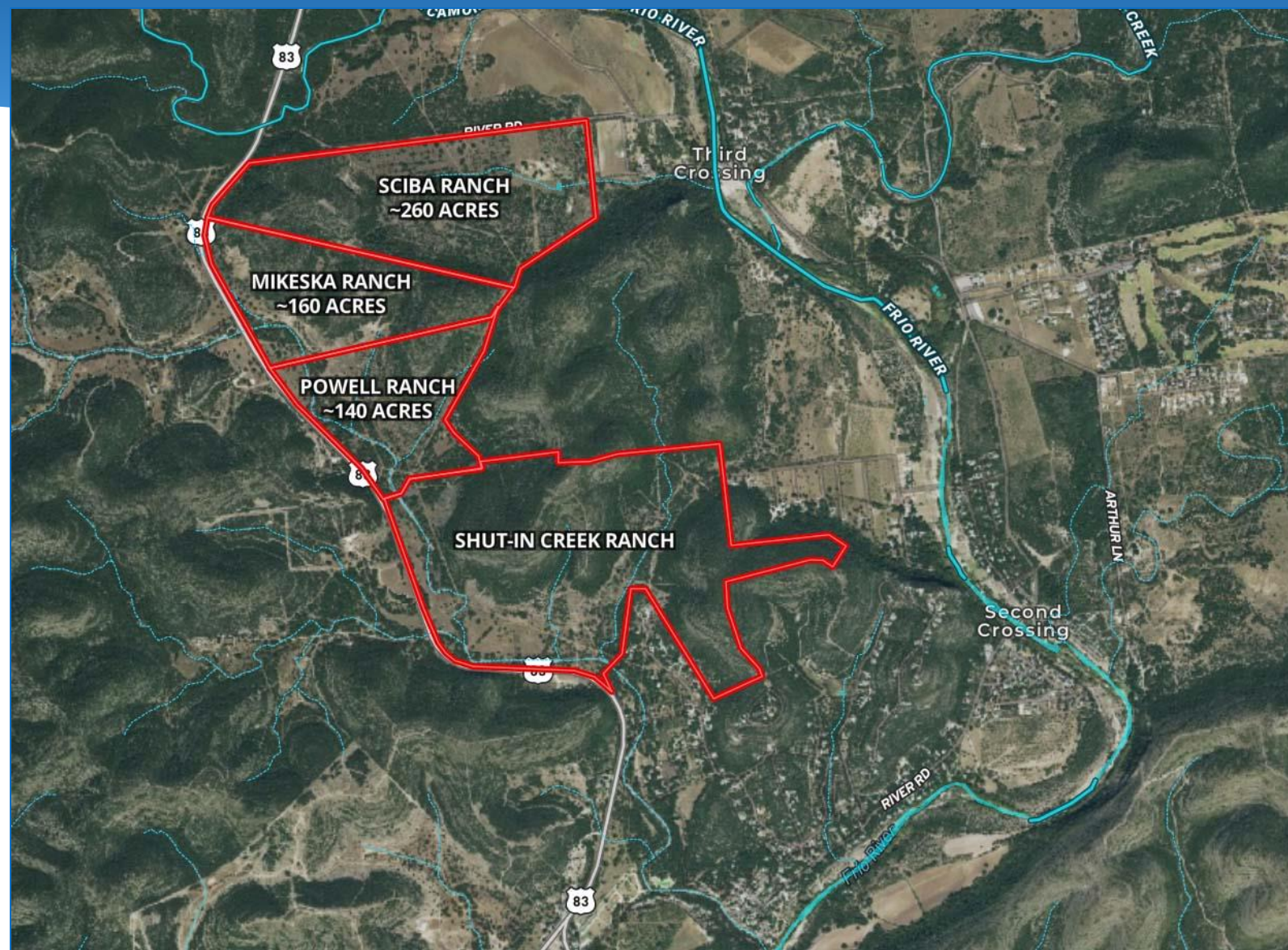
Moos Ranch (2,900 Acres) Uvalde County

Moos Ranch

- North of Uvalde, adjacent to Vanham Ranch (SAWS easement)
 - Top 50% in SET model
 - Previously considered by CAB; EAA ranked as a high priority in 2008 geological evaluation
 - GA reports high to very high water quantity and high water quality benefits; appraisal completed
- **Requesting Stage 2 consideration**



Mikeska Ranch (160 acres) Uvalde County



Mikeska Ranch (160 acres) Uvalde County

- Near Concan on U.S. Hwy 83; NW of Shut-in Creek Ranch
- Top 50% in model
- Located in Frio River watershed
- GA reports high water quantity and very high water quality; appraisal completed
- **Requesting Stage 2 consideration**

